

Goliath End of Line Systems Rotary Tables & Pallet Transfer Trolleys

Rotary tables

The rotary table is used to change the direction of travel of pallets. Fitted with roller conveyor – also available with chain conveyor on request. The turntable can rotate $\pm 90^\circ$ and $\pm 180^\circ$.

Specifications

Standard height:

350 mm or 470 mm. Standard minimum height 310 mm. Other heights on request.

Payload:

Max. 1500 kg.

Rotation:

2.8 or 3.75 RPM.

External support rollers are included to ensure smooth transition of pallets to and from the rotary table. Consoles for support rollers must be ordered separately.



Pallet transfer trolleys

Suitable for transport of pallets between two or more conveyor lines.

One of several applications is to deliver empty pallets from a single pallet magazine to several pallet loaders and to collect full pallets and transfer these for onward central conveying.

The transfer trolley can be fitted with:

- Driven roller conveyors.
- Chain conveyors.
- Rotary table with roller or chain conveyor.
- 90° angled transfer unit.

The standard transfer trolley has safety bumpers. On contact, the transfer trolley stops. The transfer trolley runs on rails fitted into or on the floor.

Specifications:

Standard width: 970 mm, 1170 mm, and 1370 mm.

Standard length: 1500 mm.

Minimum operating height:

With roller conveyor: 350 mm.

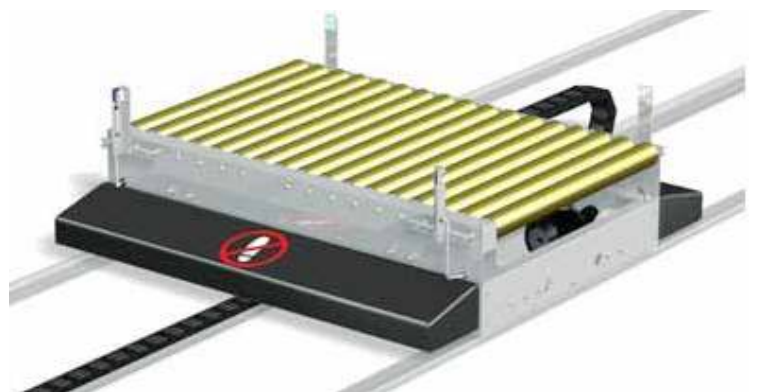
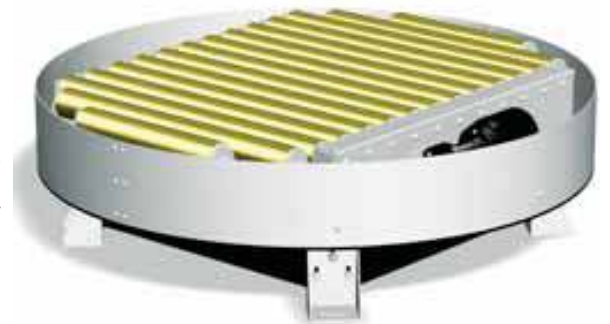
With chain conveyor: 450 mm.

Other heights on request.

Payload: Max. 1500 kg.

Speed: Standard 10 m/min.

Other speeds available on request.



For more information or to discuss your specific application call
Sales @ 067-37893 / 087-1222816

GOLIATH PACKAGING SYSTEMS LTD.

92 Silver Street, Nenagh, Co. Tipperary

Phone: 353-67-37893 Fax: 353-67-34794 E-mail: info@goliath.ie

